



# LiBhayibheli Lami

## Yenta futsi Ufundze

### Incwadzi ye-3



[www.biblesociety.co.za](http://www.biblesociety.co.za)  
bible society of south africa

Fundza  
kufundza nekubhala!  
Luhlelwati lwefundza nekubhala

# LiBhayibheli Lami Yenta futsi Ufundze Incwadzi ye-3

Siswati Literacy Programme  
First digital edition 2020

© Bible Society of South Africa 2020

Illustrations © Bible Society of South Africa 1985  
Illustrations by Annie Vallotton

All rights reserved. No part of this book may, without prior written permission of the copyright holder, be reproduced or transmitted in any form or by any means, electronic, mechanical or otherwise, either through photocopying, writing, audio recording, or any other system for information storage and retrieval.

Published by the Bible Society of South Africa  
P O Box 5500, Tyger Valley 7536, Bellville

[www.biblesociety.co.za](http://www.biblesociety.co.za)

Epub-format      ISBN 978-0-7982-2410-9  
PDF-format      ISBN 978-0-7982-2409-3



**bible society**  
of south africa





# Kutalwa kwaJesu

Josefa naMariya besuka  
emtini waseNazaretha  
baya emtini waseBhetlehema.





Kwatsi nasebase Bhetlehema  
Mariya watubula ngemfana.

Wamngocota ngendvwangu  
wamlalisa emkhombeni  
wekudlela tinkhomo.

Kwatsi nasebafika  
eBhetlehema,  
bangete bayitfola  
indzawo endlini yetihambi.







Bekunebelusi lababeluse  
ebusuku etsafeni.

Babeluse lemihlambi  
yetimvu tabo.



Kwachamuka ingilosi  
yeNkhosi yema  
embikwebelusi.

Bukhatikhati beNkhosi  
babakhanyisa.

Bashaywa luvalo  
lokukhulu.

Ingilosi yakhuluma kubo yatsi:  
“Ningesabi!  
Nginiletsele tindzaba letimnandzi.

Loluswane niyakulukhandza  
lugocotwe ngendvwangu



Lamuhla kutelwe Jesu eBhetlehema.  
UyiNkhosi. Hambani niyekumfuna.

lulele emkhombeni wetinkhomo.”



*Akadunyiswe Nkulunkulu!*

*Akadunyiswe Nkulunkulu!*



Kwatsi kungaketeleleki, kwaba  
khona sicumbi lesikhulu  
setingilosi tasezulwini, sihlabela sitsi

“Akadvunyiswe Nkulunkululo setulu kakhulu,  
akube nekuthula emhlabeni kubantfu  
labatfokotelwa nguye.”

Tingilosi tabe setibuyela ezulwini.



Belusi bamemana batsi,  
“Asambeni siye eBhetlehema  
siyekubona loko lokwentekile!”

Base bayaphutfuma baya khona,  
bakhandza Mariya naJosefa,  
balubona luswane lulele  
emkhombeni wetinkhomo.



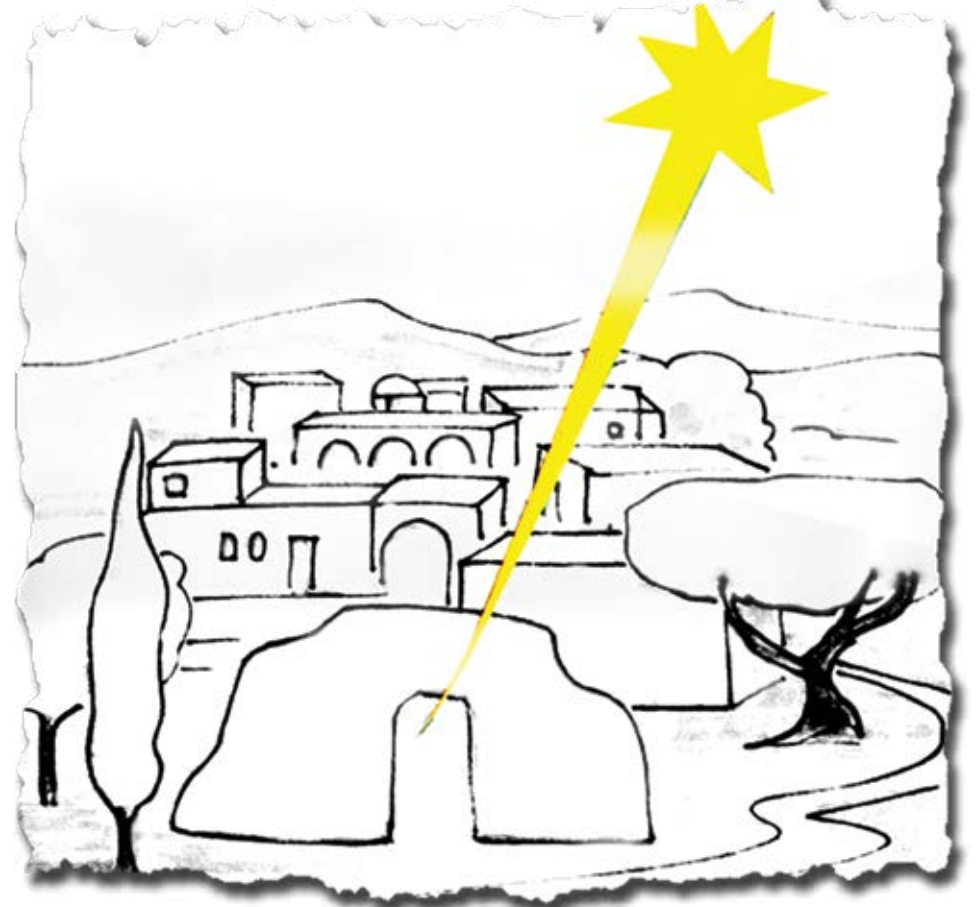
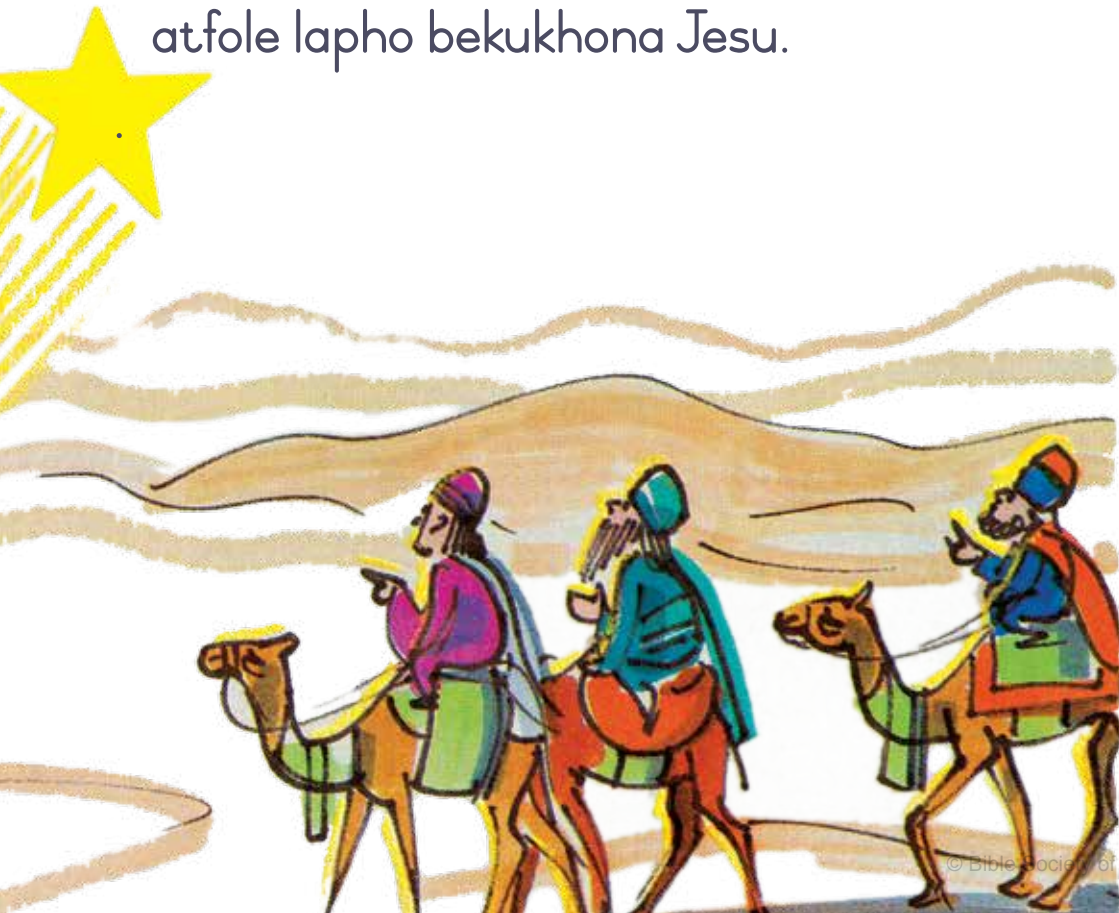


Kwase kufika emadvodza labetati  
afuna Jesu.

Lamadvodza abephuma emphumalanga.

Abona inkhanyeti.

Lenkhanyeti yasita lamadvodza kutsi  
atfole lapho bekukhona Jesu.



Inkhanyeti yayihamba embikwato  
letati yaze yema etikwayo  
lenzawo lapho  
bekukhona lolo luswane.

Kwatsi kube tati tiyibone  
lenkhanyeti tjabula kakhulu.



Tati tangena endlini.

Tatsi kube tibone loluswane  
kanye naMariya, unina walo  
taguca takhuleka kulo.



Takhipha tipho letatitiphetsele  
loluswane.

Letipho bekuyigolide  
nemphepho kanye nemakha.



## <sup>a</sup><sub>b</sub> Kuhlanganisa emagama

Buka letitfombe letingentansi bese  
uhlukanisa ligama edvute nato.



s i l o i n i g

n



h y t a i e i k i n

n



e u j s

s

# <sup>2</sup><sub>3</sub> I-gridi yetinombolo

Gcwalisa tinombolo letishodako etibiyelweni.

1	+	1	=	<input type="text"/>
+		+		+
2	+	3	=	<input type="text"/>
=		=		=
<input type="text"/>	+	<input type="text"/>	=	<input type="text"/>

$$3 - 1 = \text{$$

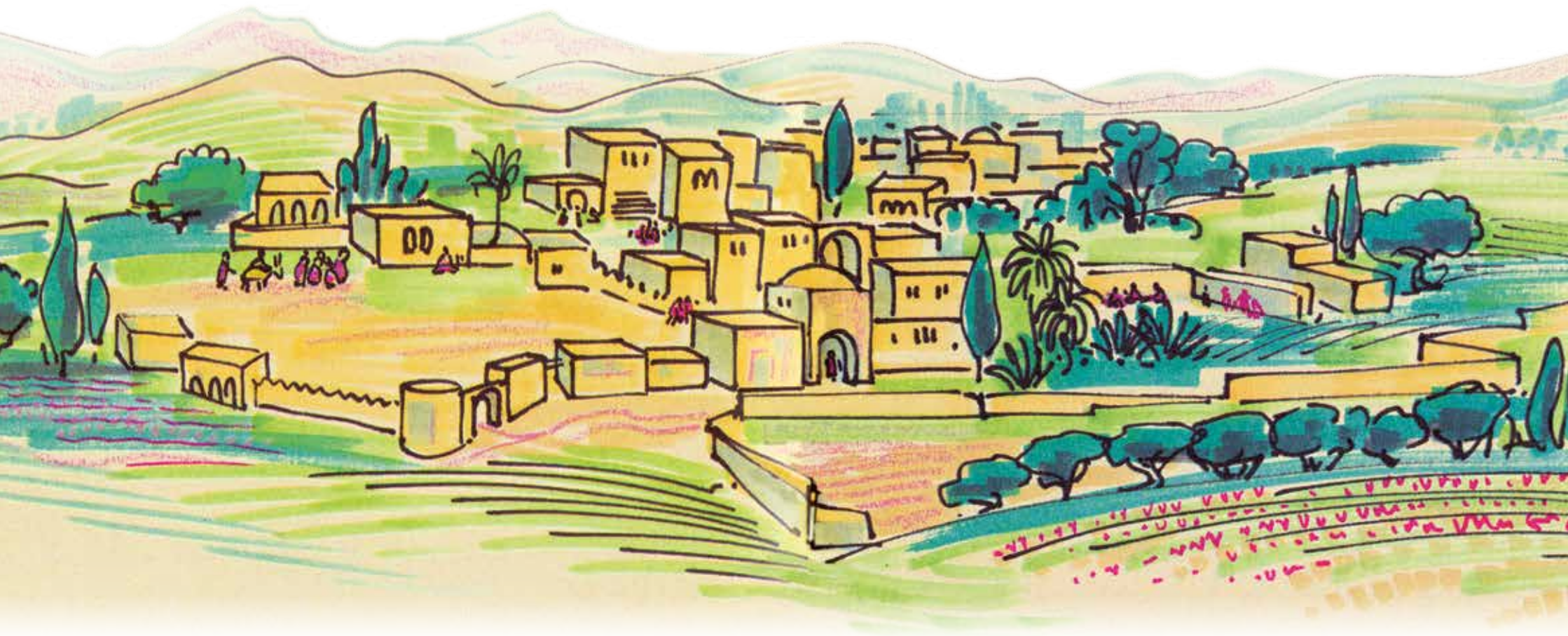
$$2 - \text{$$

$$\text{} + 2 = 6$$





# Jesu emshadweni



Edolobheni laseKhana  
bekunemshado

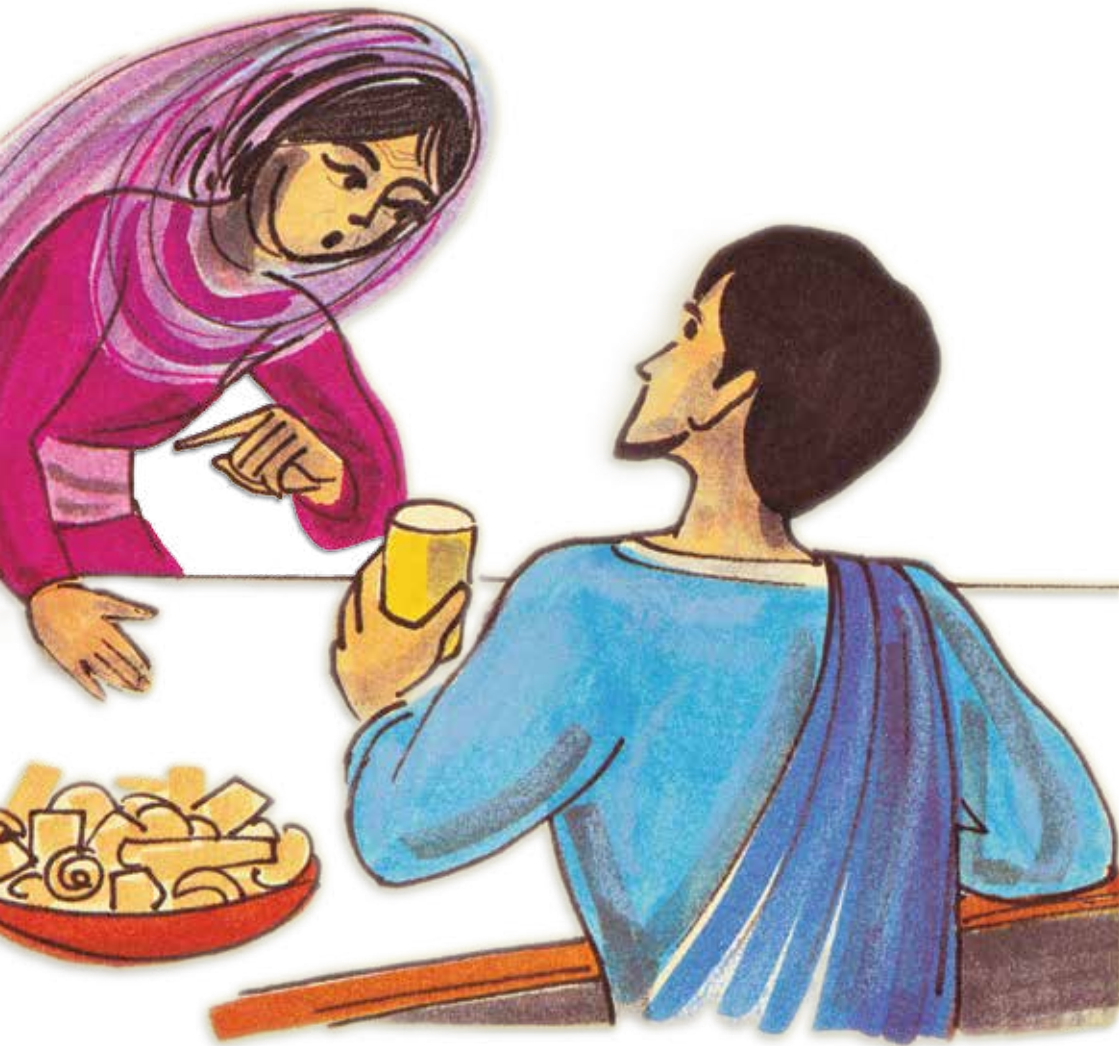
Unina waJesu naye  
abekhona.



Jesu abemenywe kanye  
nebafundzi bakhe.



Kepha baphelelwa liwayini.



Unina waJesu watsi kuye,  
“Sebate liwayini.”

Jesu watsi kuye,  
“Make ungena njani  
emsebentini wami?”

Sikhatsi sami sisengakafiki.”

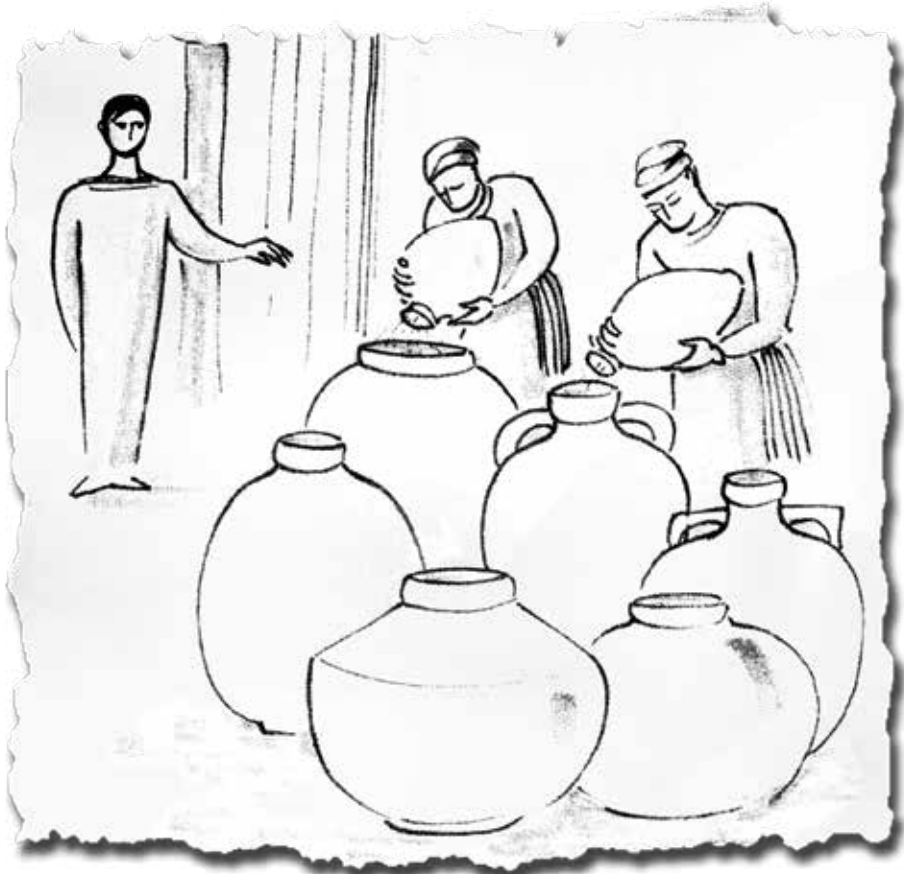




Unina watsi etincekwini,  
“Nibokwenta konkhe  
lanitjela kona.”



Bekunetimbata tematje  
letatisitfupha khona lapho.



Jesu watsi kuletinceku,  
“Gcwalisani letimbata ngemanti.”

Batigcwalisa tatsi nswi.

Jesu wabese utsi etincekwini,  
“Khanini niyewuvisa  
lona lophetse lomshado.”





Lendvodza beyiphetse  
yawanambitsisisa lamanti  
labesagucuke liwayini.

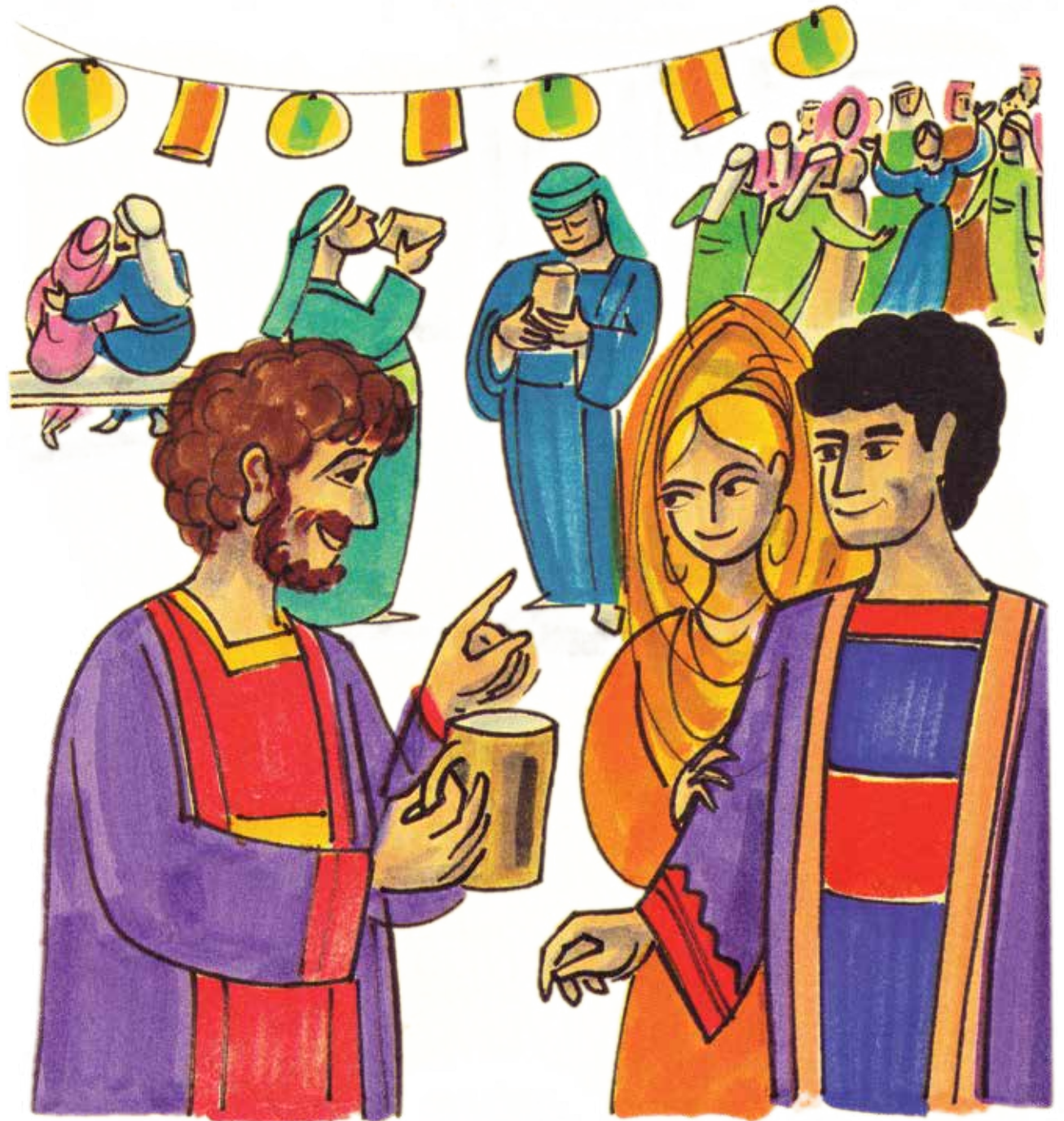
Lendvodza beyiphetse umshado  
beyingati kutsi lelo  
wayini-ndzini laliphumephi.



Ngako-ke, wabese ubita  
umkhwenyane futsi  
watsi kuye,

“Wonkhe umuntu ucala  
ngekukhipha  
liwayini lelimnandzi kucala.

Kodwa wena usuke ubeka  
leli lelimnandzi kuze  
kuba ngunyalo!”



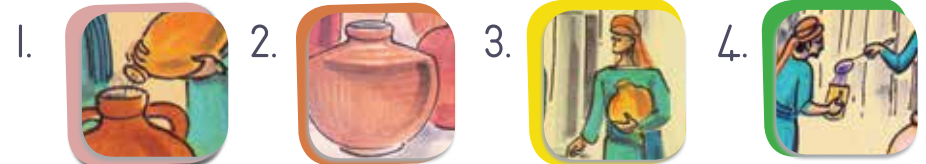
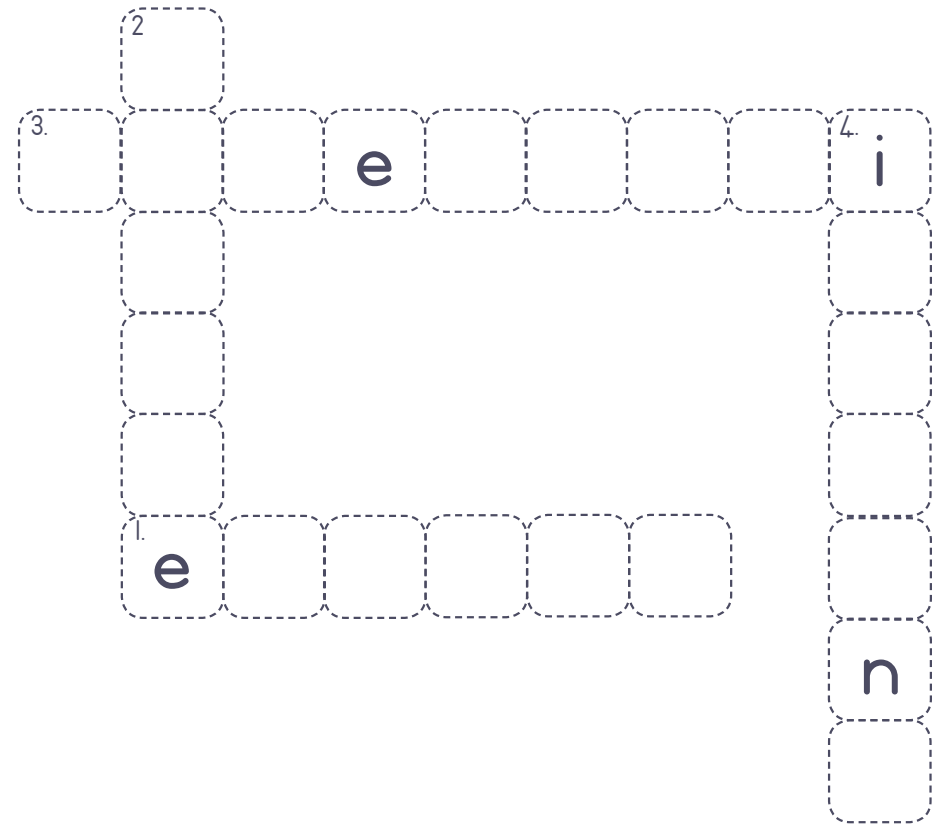


Jesu wenta lesibonakaliso sakhe sekucala eKhana.

Kusukela ngaleso sikhatsi bafundzi bakhe bakholwa nguye.



**a** **b** I-phazili yemagama laphambene Cenzela lamagama laphambene ngekucondzanisa ngesitfombe kunombolo ngayinye.



## <sup>2</sup><sup>3</sup> Umdlalo loliciniso noma emanga

Faka ithiki ukhombwe kutsi sitatimende lesingentansi ngasinye siliciniso noma singemanga.

$2 > 3$

kuli-ciniso

kunge-manga

$4 < 7$

kuli-ciniso

kunge-manga

$5 > 1$

kuli-ciniso

kunge-manga

$6 < 8$

kuli-ciniso

kunge-manga

$10 = 5 + 5$

kuli-ciniso

kunge-manga

$1 + 2 > 4$

kuli-ciniso

kunge-manga

$6 + 2 = 4 + 4$

kuli-ciniso

kunge-manga

$3 - 0 = 3$

kuli-ciniso

kunge-manga

$4 + 3 < 6$

kuli-ciniso

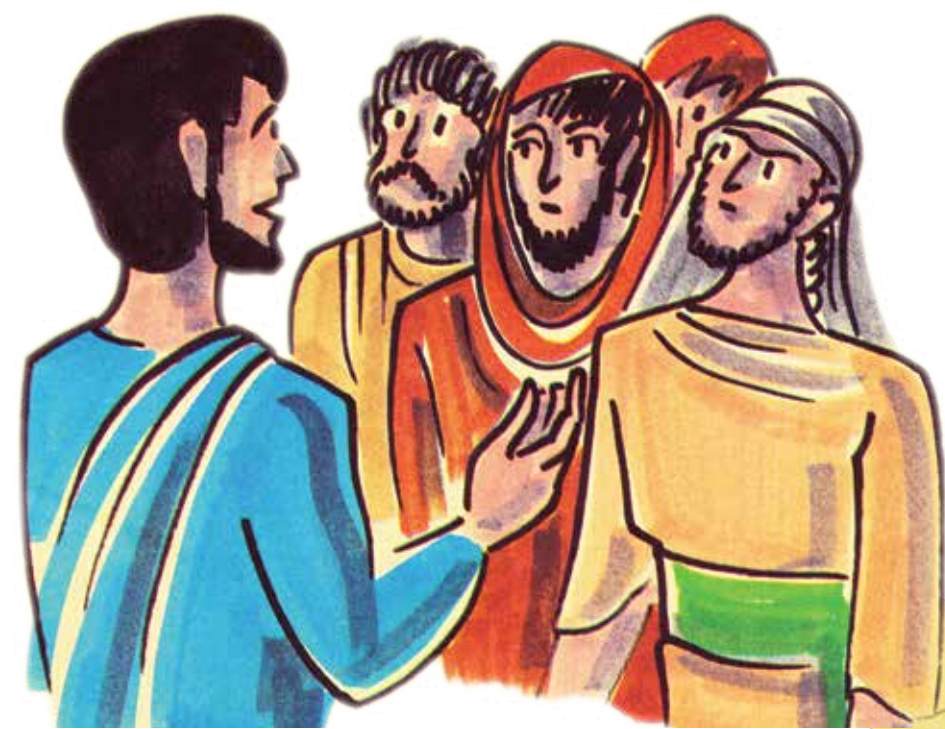
kunge-manga





# UmSamariya Lolungili

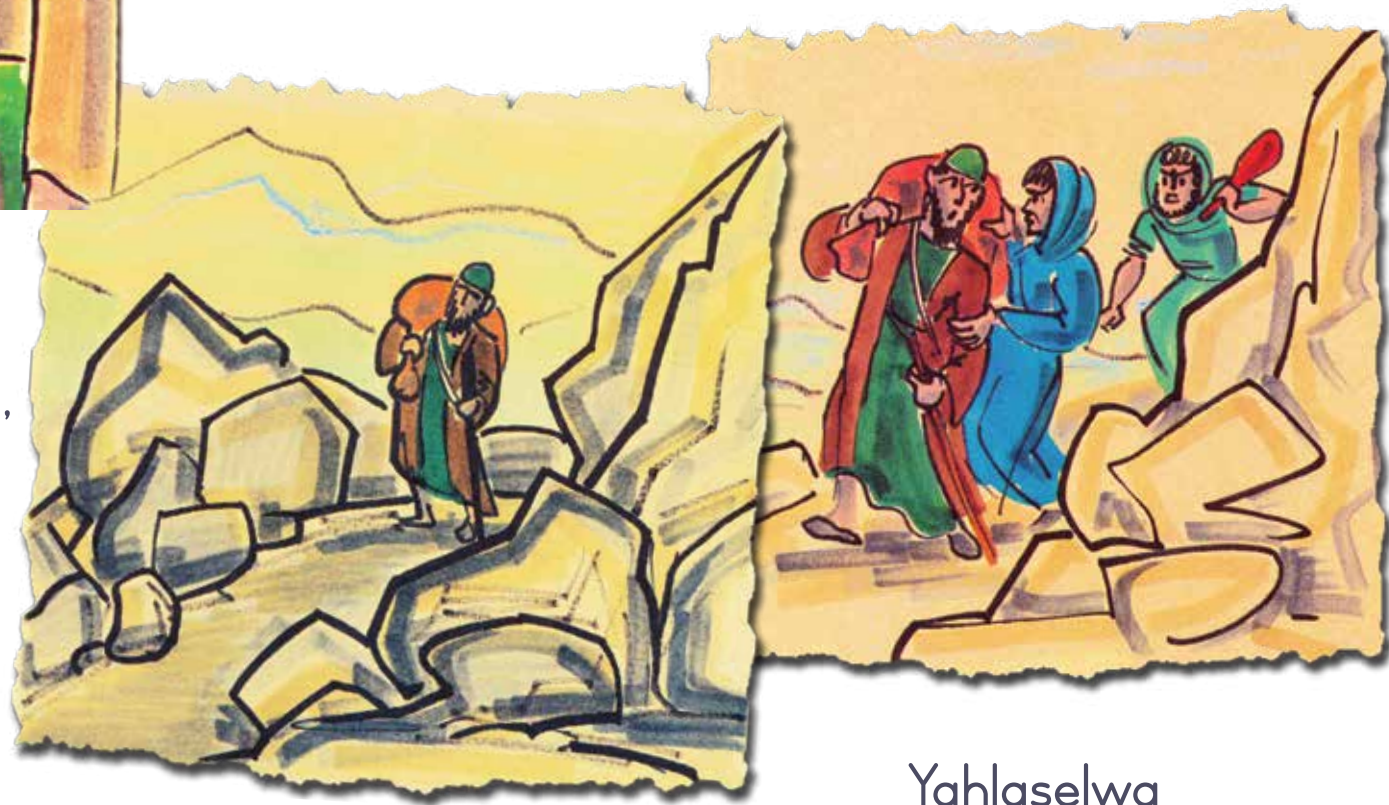
Ngalelinye lilanga Jesu  
abekhuluma nebantfu.



Ngalelinye lilanga indvodza  
letsite beyihamba yodwana  
emgwacweni.

Lenye indvodza yambuta yatsi,  
“Ngubani makhelwane wami?”

Ngako-ke Jesu wacocela  
bantfu indzaba.



Yahlaselwa  
tigebengu.





Tadzabula tingubo tayo  
futsi tayishaya.

Tacishe tayibulala  
lendvodza, futsi tayishiya  
ilele khona lapho.





Umphristi wehla ngaleyo ndlela.

Watsi kube ayibone lendvodza,  
wayigega, wahamba ngalenyeye  
indlela.





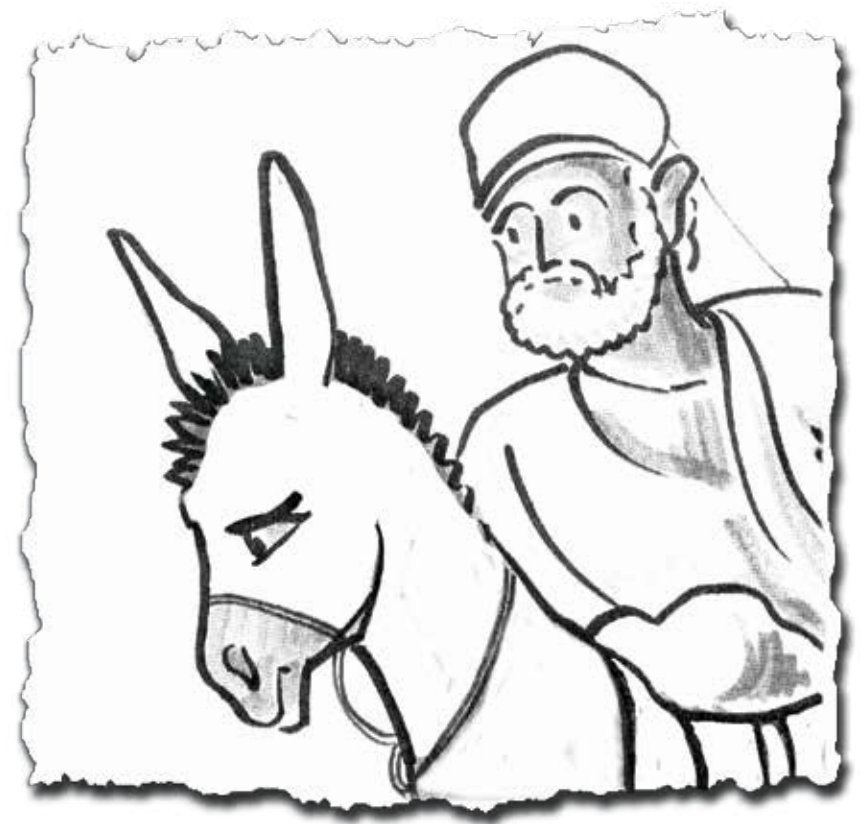
Kanjalo,  
Nendvodza lebeyisita  
etehempelini yefika.



Yaya yayibuka elendvondza  
nayo yashaya  
ngale kwakhe.



Kepha indvodza yelive  
laseSamariya  
beyihamba ngaleyo ndlela.



Watsi kube ayibone  
lendvondza lehluphekile  
lebeyishaywe tigebengu  
wayihawukela futsi waya kuyo.





Watsela emafutsa neliwayini  
emancebeni ayo  
wabese uwabopha ngendvwangu.

Wabese ugibelisa lendvodza  
embongolweni yakhe.







Ngakusasa  
Wakhipha imali  
lengemasiliva lamabili.

Wayisa lendvodza endlini  
yetihambi.

Lapho kuleyo ndlu  
yetihambi wayinakekela  
lendvodza.



Wayinika umnikati  
walendlu yetihambi  
Futsi watsi kuye,  
“Ngongele nangu  
umuntfu wami.



Nasengibuya  
ngitakukhokhela tonkhe  
tindleko takhe.”



Jesu nasacedzile kucoca indzaba,  
 wabuta watsi, “Ngumuphi-ke  
 kulabantfu labatsatfu longatsi  
 waba ngumakhelwane kulomuntfu  
 lowahlaselwa tigebengu?”

Lendvodza yaphendvula yatsi,  
 “Ngulona lowaba nemhawu kuye.”  
 Jesu watsi,  
 “Hamba nawe wente njalo.”



## <sup>a</sup><sub>b</sub> Tfola emagama

Tfola emagama laseluhlwini nalinnye lelifihlakele.

- ncedza
- umsamariya
- tinhlavumali
- timphahla
- tigebengu
- umgwaco
- umphristi
- imbongolo

u	g	p	r	a	t	p	a	t	o	z
m	u	o	i	s	i	e	r	i	i	i
s	n	n	t	b	n	b	i	m	g	i
a	c	g	i	e	h	e	y	p	z	m
m	e	p	g	e	l	e	r	h	u	b
a	d	h	e	o	a	p	r	a	m	o
r	z	a	b	e	v	i	s	h	s	n
i	a	j	e	s	u	r	i	l	a	g
y	h	t	n	u	m	g	w	a	c	o
a	l	i	g	m	a	u	o	i	a	l
i	a	m	u	s	l	o	i	s	l	o
j	u	m	p	r	i	s	t	i	c	z

# <sup>2</sup><sup>3</sup> Kuphinzaphindza

## lokulanglangene

Phendvula imibuto yekuphinzaphindza ngamunye ngentansi.

$1 \times 2 =$

$2 \times 3 =$

$3 \times 1 =$

$2 \times 4 =$

$5 \times 2 =$

$3 \times 3 =$

$2 \times 6 =$

$3 \times 4 =$





Jesu

nesivunguvungu



Jesu wangena esikebheni.

Bafundzi bakhe nabo  
bebasesikebheni.



Bacala kwewelela  
ngesheya kwelwandle.







Jesu abelele  
ngemuva esikebheni.

Kusenjalo kwesuka lesikhulu  
sivunguvungu.

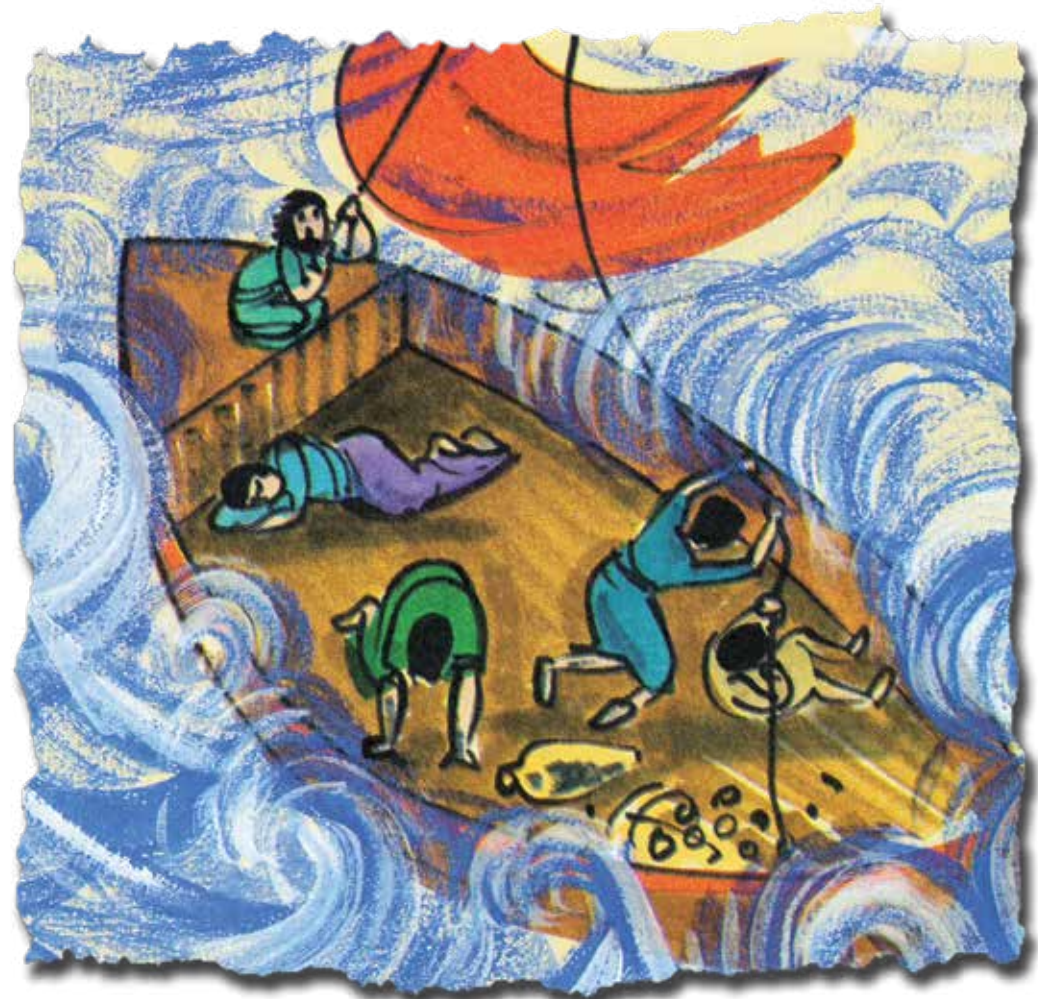






Kepha Jesu bekaloku alele.

Emagagasi angena esikebheni,  
futsi sikebhe sacishe  
sagcwaliswa ngemagagasi.





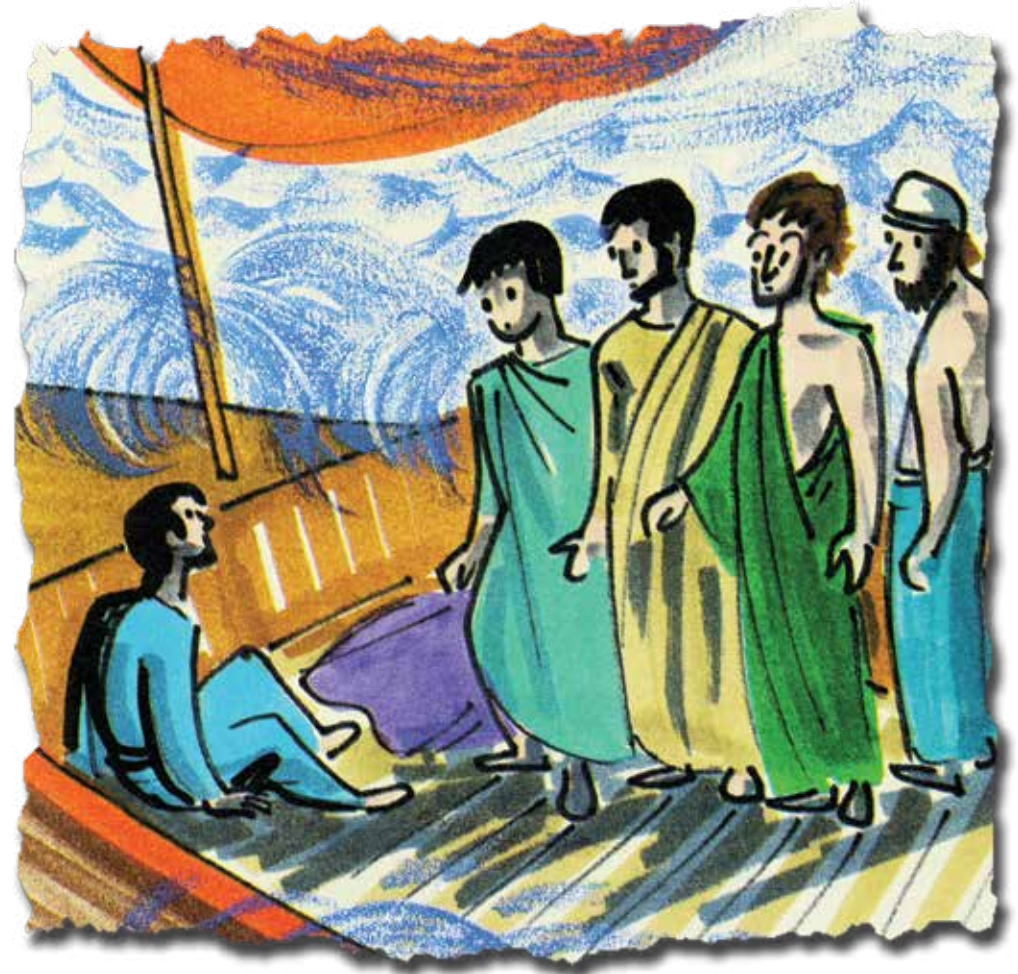
Bafundzi baya kuJesu  
bamvusa.

Batsi, “Nkhosi sisindzise!  
Sesiyafa!”



Jesu watsi,  
“Nesabani?”

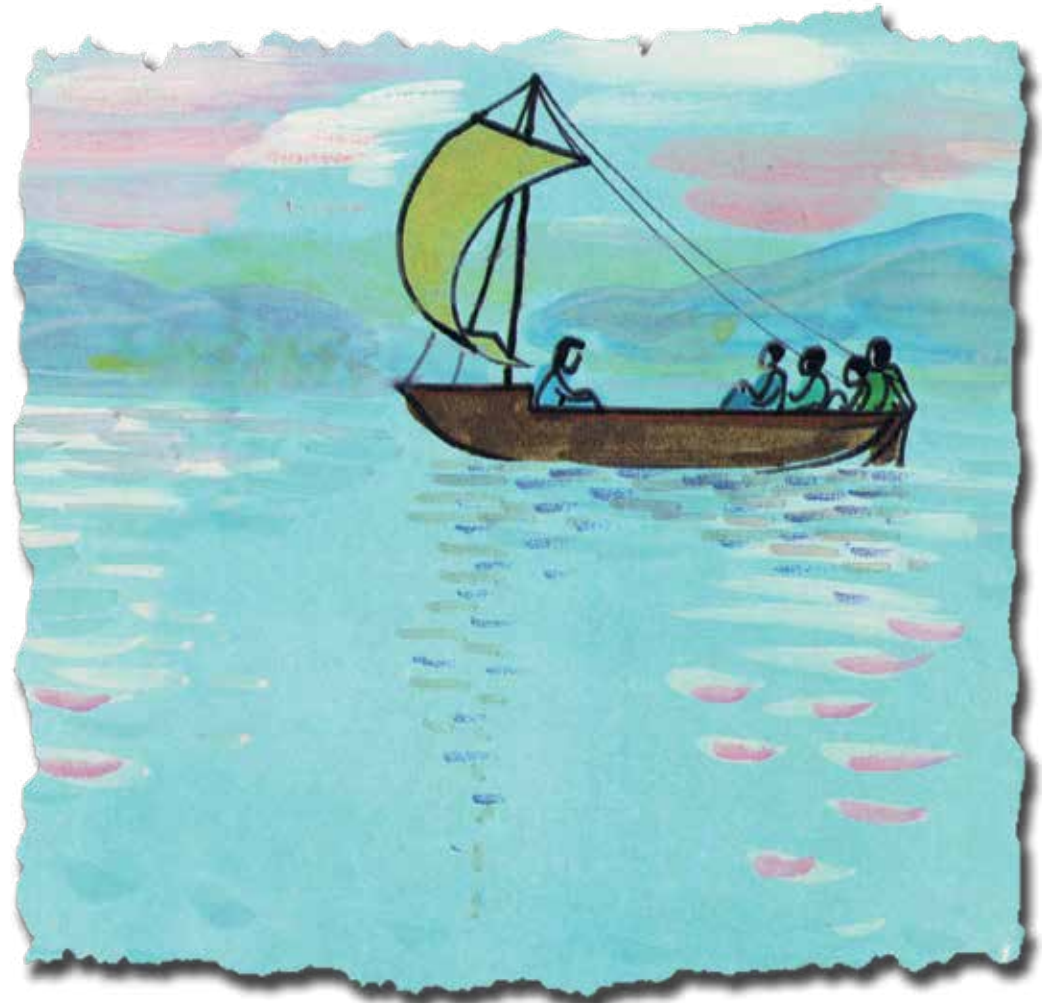
Wabese uyasukuma.





Wekhuta umoya  
nemagagasi kutsi kubindze.

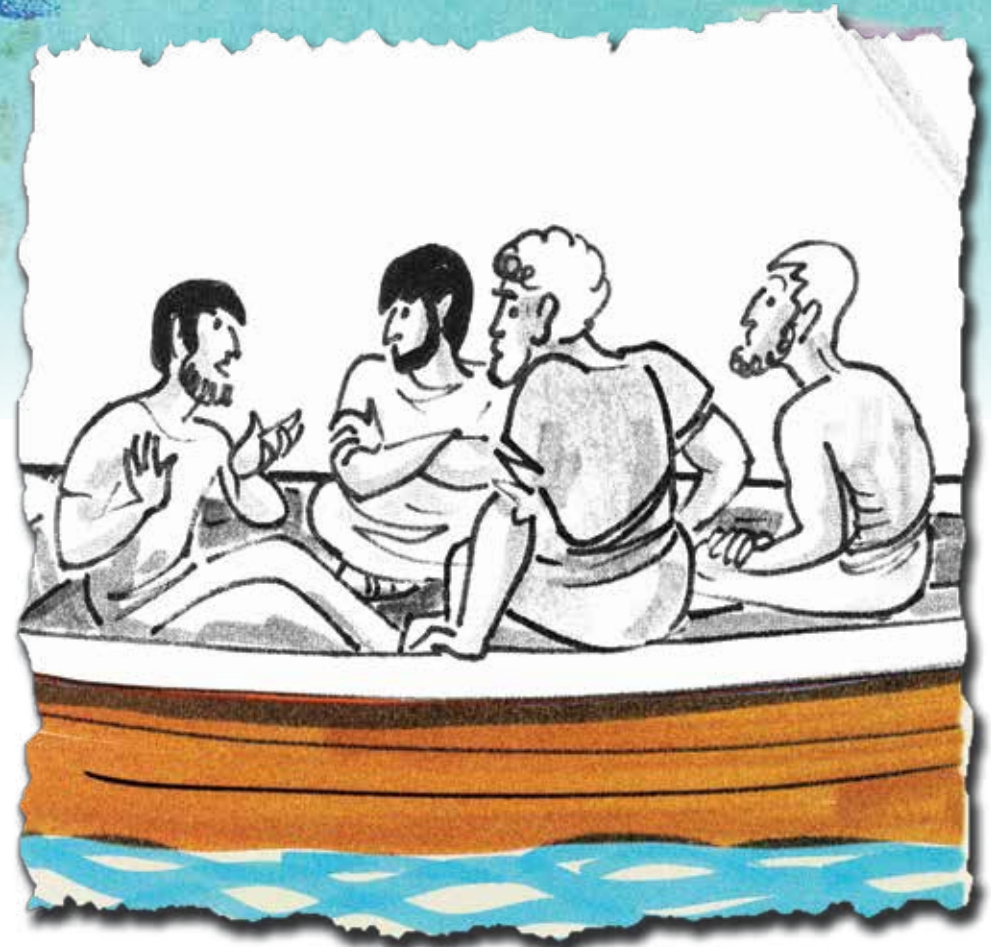
“Thula!” kwasho Jesu.  
“Utsi nya!”



Kwathula kwatsi nya.

Bafundzi bamangala futsi  
besaba.

Ngulowo wabuta lomunye atsi,  
“Kantsi ngubani lendvodza  
lena? Ngisho nemoya  
nemagagasi kumlalele!”







## 2 3 Tfola ifomula

Ufika njani emphendvulweni ngayinye kuleti letingentansi?

• 8

• 14

• 12

• 6

• 9

• 11

7	+	12	-	9
+	4	÷	5	+
7	×	2	×	4
-	3	×	3	+
6	+	5	÷	6





# Zakewu

Bekunendvodza  
ligama layo  
lebekunguZakewu.

Wonkhe umuntfu  
bekamati.





Zakewu bekayindvodza lenjingile  
lebeyihlala eJerikho.

Bantfu bebangamtsandzi,  
ngoba bekangumtselisi.

Zakewu bekacokelela  
timali kubantfu.

Letimali betitebabusi.







Ngalelinye lilanha Jesu wefika eJerikho.

Zakewu  
bekafuna kubona Jesu.







Zakewu wagijimela ngembali  
kwesicumbi  
wabese ukhwela esihlahleni.

Kodwa Zakewu wehluleka  
ngoba bekayindvodza lemfisha.





Wagibela esihlahleni  
kute atewubona Jesu.



Watsi kube afike lapho Jesu,  
wabese ubuka etulu.



Jesu watsi,  
“Zakewu, shesha wehle,  
ngobe kufanele ngiyongenisa  
endlini yakho lamuhla.”



Zakewu  
washesha wehla.

Zakewu wemukela  
Jesu endlini yakhe.



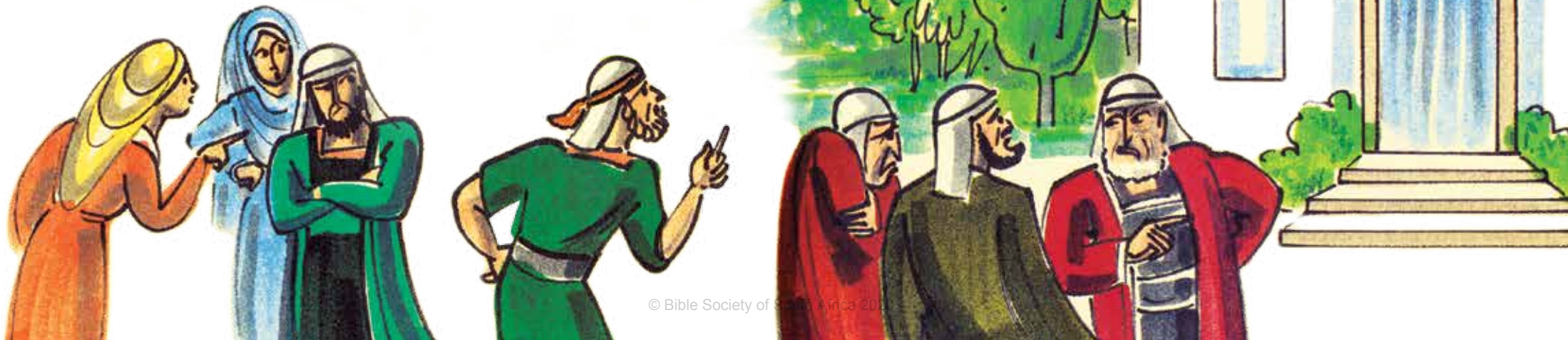


Zakewu wajibula  
kakhulu.



Bonkhe bantfu  
labakubona loko bavungama.

Batsi,  
“Hawu Jesu uhlala  
emtini walesoni!”



Zakewu wasukuma  
watsi kuJesu,

“Nkhosi, ngiyawukhipha incenye  
yalenginako ngenetise labeswele.



Futsi nakukhona lengimdlele,  
ngitakubuyisela sekuphindvwe  
kane.”

Jesu watsi,  
“Lamuhla seyifikile insindziso  
kulomuti.  
Ngitele kutewusindzisa  
labalahlekile.”





Manje, Zakewu wajabula kakhulu!



## <sup>a</sup><sub>b</sub> Tfola liphutsa

Tfola bese ubiyela emaphutsa emagama lapeleke kabi ngentansi.

b e v u n g a m a

w e m m k e l a

t e m a l e

j i r i k h o

g i b e l l i

w i t l a

e t o l u

j a b o l a



# 2 3 Kubala tinhlavumali

Cedza Zakewu abale tinhlavumali takhe.



$$1c + 2c + 5c =$$

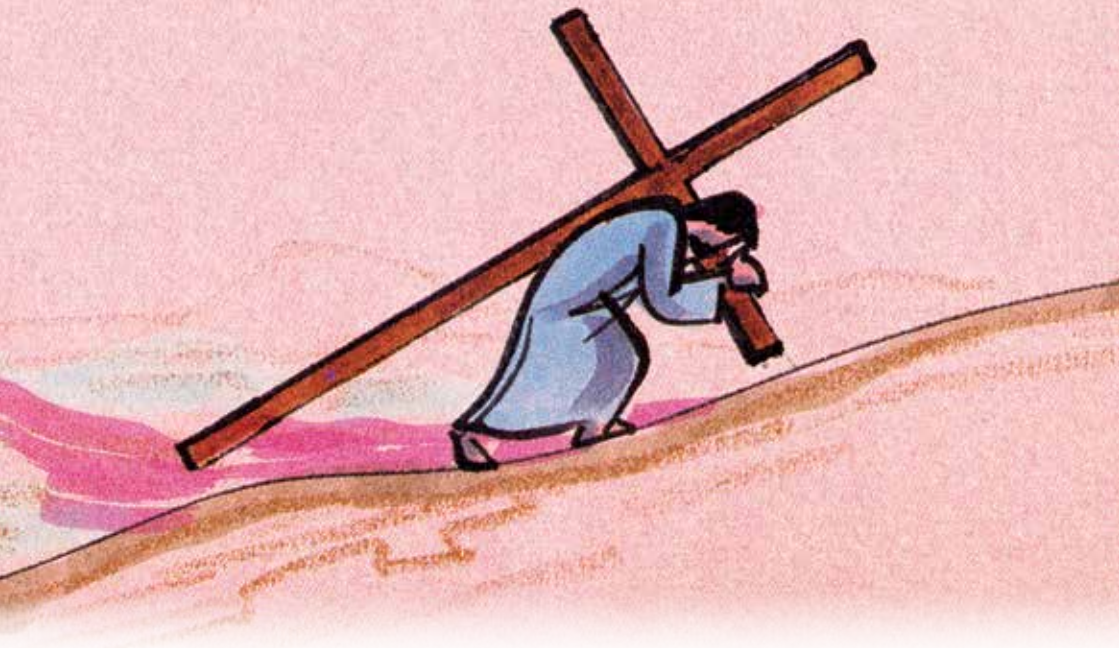
$$2c + 5c + 10c =$$

$$1c + 1c + 5c + 20c =$$

$$2c + 2c + 5c + 5c + 10c + 10c =$$

$$1c + 1c + 5c + 10c + 50c =$$



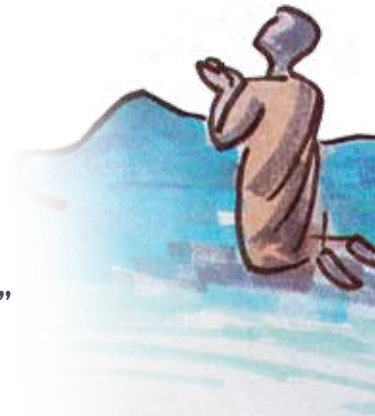


# Jesu uyaphila

Jesu nebafundzi bakhe waya entsabeni.

Jesu wathandaza watsi

“Babe susa kimi lendzebe  
yelusizi. Noko kungabi  
yintsandvo yami, kodvwa  
akwenteke intsandvo yakho.”





“Pho ungiyo yini indvodzana  
yaNkulunkulu?”  
Jesu waphendvula watsi,  
“Ngiyasho kutsi ngingiyo.”

UmPhristi Lomkhulu watsi  
kumalunga elicoco,  
“Sinteni-ke ngaloJesu.”

Kwabese kufika Judasi, aholo sicumbi  
semadvodza sihlome ngetinkemba  
netindvuku.

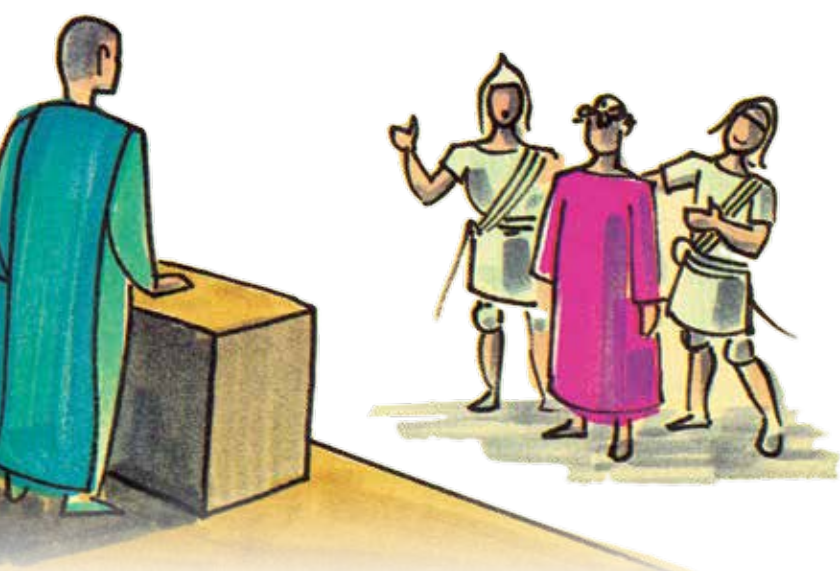
Baphendvula batsi, “Kufanele afe!”

Befika babopha Jesu  
Babese bayamtsatsa bamyisa  
kumPhristi Lomkhulu.

UmPhristi Lomkhulu wabuta  
Jesu watsi:







Baholi bemaJuda babese  
batsatsa Jesu bamyisa kuPilatu,  
lowagcina amnikele emasotjeni.



Emasotja amphukuta  
Jesu ametfwesa  
umchele wemanyeva  
enhloko yakhe.

Bamtsatsa bamyisa  
endzaweni lekutsiwa  
yiGolkotha.

IGolkotha isho kutsi  
“Yindzawo yeSikobho.”



Lamasotja abetsela

Jesu esiphambanweni.



Mariya,

make waJesu,  
bekeme khona lapho.

Bekeme eceleni kwaJohane,

futsi longumngani Jesu bekamtsandza.

Jesu watsi kunina,

“Make, nanso indvodzana yakho!”

Watsi kumngani wakhe,

“Buka la, nango unyoko.”

Johane wabese

utsatsa Mariya  
wayohlala naye  
ekhaya kakhe.

Jesu wakhala ngelivi

lelikhulu  
wabese uyafa.



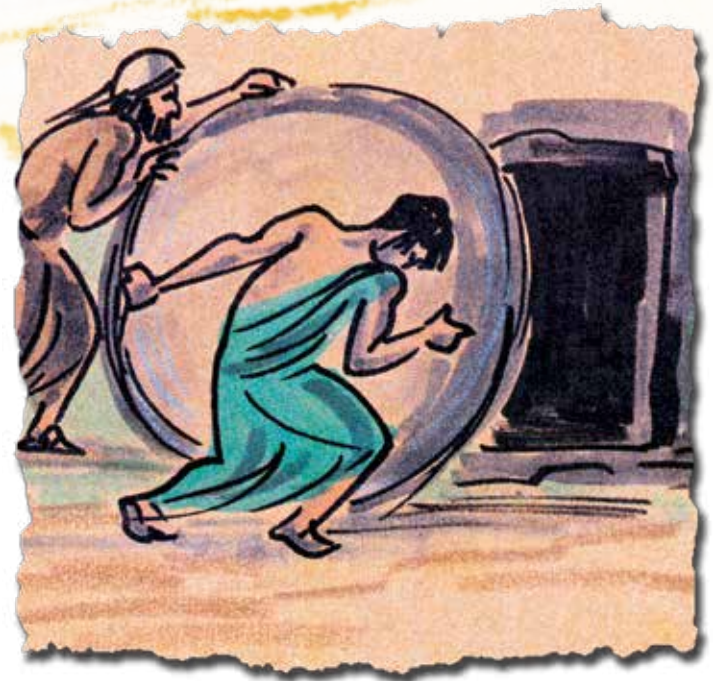




Bametfula Jesu  
esiphambanweni.

Babese bayamngcwaba edvwaleni.

Bagicitela inguzanguza yelitje  
bavala ngayo umnyango  
welithuna.



NgeLisontfo ekuseni labanye,  
bomake baya ethuneni.

Babona kutsi litje  
ligicitiwe lesuswa.

Kepha umtimba waJesu  
bewungekho lapho!

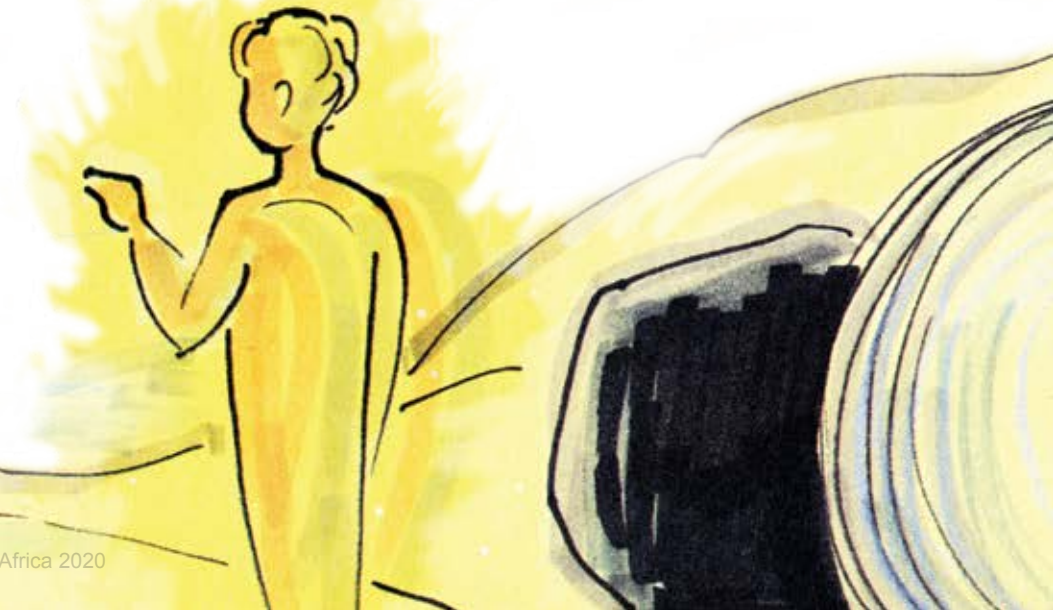
Ingilozi levela ezulwini  
Yatsi kulabomake,  
“Jesu uvukile, uyaphila!  
Hambani nitjelebangani  
bakhe!”



Ngalo lelo lalanga emadvodza lamabili  
bekahamba aya e-Emawusi.

Bebahamba bakhulumisana  
ngato tonkhe tintfo  
letatentekile.

Bebadzabukile kakhulu.  
Jesu wasondzela kubo  
wahambisana kanye nabo.







Jesu wabatjela kutsi  
bekufanele kutsi afe.

Befika emtini.

Lamadvodza atsi kuJesu,  
“Hlala natsi.”



Jesu wangena futsi wahlala phasi  
nabo kute batewudla.





Nasekudliwa, watsatsa  
sinkhwa wasibusisa,  
wase uyasihlephula  
sewuyabanika.

Lamadvodza ati kutsi  
nguJesu.

Basukuma ngaso leso  
sikhatsi bancandzeka babuyela  
eJerusalema.

Batjela bangani babo ngaloko  
lokwentekile.

Batsi babone Jesu.





Nalaba lababili babatjela ngendlela  
lababone ngayo Jesu.

Batsi basakhuluma ngaloko, Jesu  
wema emkhatsini wabo.

Jesu watsi kubo,  
“Ngimi lucobo lwami.”



Bebagcwele injabulo.

Bebati kutsi Jesu uyaphila!

## **a** **b** Sehlukanisi Semakhodi

Luhlavu ngalunye luhlanganiswe nenombolo  
letsite. Ungawahlukanisa lamakhodi langentansi?

7 15 12 11 15 20 8 1  
  |       |  a

13 1 19 15 20 10 1

5 20 8 21 14 5 14 9

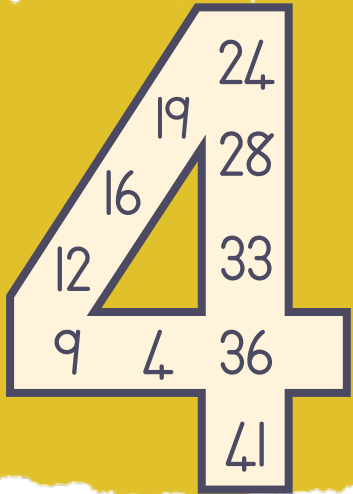
19 9 3 13 2 9

a	b	c	d	e	f	g	h	i	j	k	l	m
1	2	3	4	5	6	7	8	9	10	11	12	13

n	o	p	q	r	s	t	u	v	w	x	y	z
14	15	16	17	18	19	20	21	22	23	24	25	26

# 2 3 Emaphutsa laphindzaphindzekako

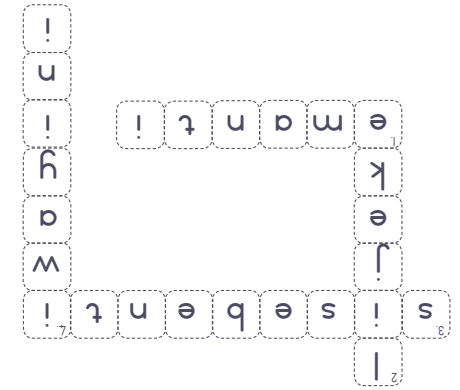
Tfola ubuye ubiyele tonkhe tinombolo letingangeni enombolweni lenkhulu.



- 1. Kungemanga 2. Kuliciniso
- 3. Kuliciniso 4. Kuliciniso
- 5. Kuliciniso 6. Kungemanga
- 7. Kuliciniso 8. Kuliciniso
- 9. Kungemanga

Umdlalo loliciniso  
noma emanga

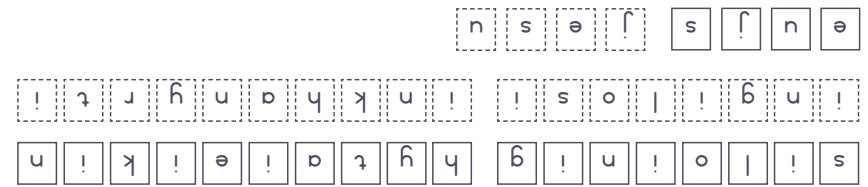
$$\begin{array}{r}
 7 + 2 = 9 \\
 2 - 2 = 0 \\
 3 - 1 = 2
 \end{array}$$



I-phazili yemagama  
laphambene:

7	=	7	+	3
=		=		=
5	=	3	+	2
+		+		+
2	=	1	+	1

I-gridi yetinombolo:



Kuhlanganisa emagama:

Tisombululo





# Emathebuli ekuphindzaphindza (1-10)

1x	2x	3x	4x	5x
1x1=1	2x1=2	3x1=3	4x1=4	5x1=5
1x2=2	2x2=4	3x2=6	4x2=8	5x2=10
1x3=3	2x3=6	3x3=9	4x3=12	5x3=15
1x4=4	2x4=8	3x4=12	4x4=16	5x4=20
1x5=5	2x5=10	3x5=15	4x5=20	5x5=25
1x6=6	2x6=12	3x6=18	4x6=24	5x6=30
1x7=7	2x7=14	3x7=21	4x7=28	5x7=35
1x8=8	2x8=16	3x8=24	4x8=32	5x8=40
1x9=9	2x9=18	3x9=27	4x9=36	5x9=45
1x10=10	2x10=20	3x10=30	4x10=40	5x10=50
6x	7x	8x	9x	10x
6x1=6	7x1=7	8x1=8	9x1=9	10x1=10
6x2=12	7x2=14	8x2=16	9x2=18	10x2=20
6x3=18	7x3=21	8x3=24	9x3=27	10x3=30
6x4=24	7x4=28	8x4=32	9x4=36	10x4=40
6x5=30	7x5=35	8x5=40	9x5=45	10x5=50
6x6=36	7x6=42	8x6=48	9x6=54	10x6=60
6x7=42	7x7=49	8x7=56	9x7=63	10x7=70
6x8=48	7x8=56	8x8=64	9x8=72	10x8=80
6x9=54	7x9=63	8x9=72	9x9=81	10x9=90
6x10=60	7x10=70	8x10=80	9x10=90	10x10=100